



DR. ACÉL & PARTNER AG

International Consulting in Logistics Management

## Why with us?

### Lean Management – Logistics & Production

## Your Success is Our Goal!

### Your Chance – Our Know-how

**Our Experts** provide their logistical & technical know-how.

We tailor **Holistic Solutions** to our customers' needs.

**Extensive Experience** shapes our performance and services.

**Proven Methods** ensure your project's success, from concept phase to implementation.

**ETH Zurich, our direct contact** for leading research and teaching

### Our principles

**Interdisciplinary Approach** during the whole process, through every sub-area up to implementation

**Future-oriented & Creative Solutions,** realized in close collaboration with you & your team

**Careful Handling** of all projects we are entrusted with

We balance **Economic Necessities & Human Concerns.**

**Neutral and Independent Advice** is what we provide.



Dr. Peter Rutishauser  
Equatis AG

“Dr. Peter Acél is a highly creative thinker and practitioner. He has extensive expertise in the field of logistics and is personally deeply involved in the projects he oversees. He finds effective solutions and provides valuable insights that have consistently helped us move forward.”

## Experience from over 900 Consulting Projects with over 300 Satisfied Clients



**Dr. Peter Acél**  
CEO

We are here for your support.  
Take advantage of the experience  
and expertise of our team.



**Dr. Noëlle Jufer**  
Senior Consultant



**Frédéric Rappan**  
Senior Consultant



**Jacqueline Rubeli**  
Senior Consultant



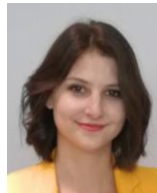
**Dr. Simon Züst**  
Senior Consultant



**Rahel Parnitzki**  
Manager



**Andreas Acél**  
Consulting Support



**Lea van der Weide**  
Consulting Support

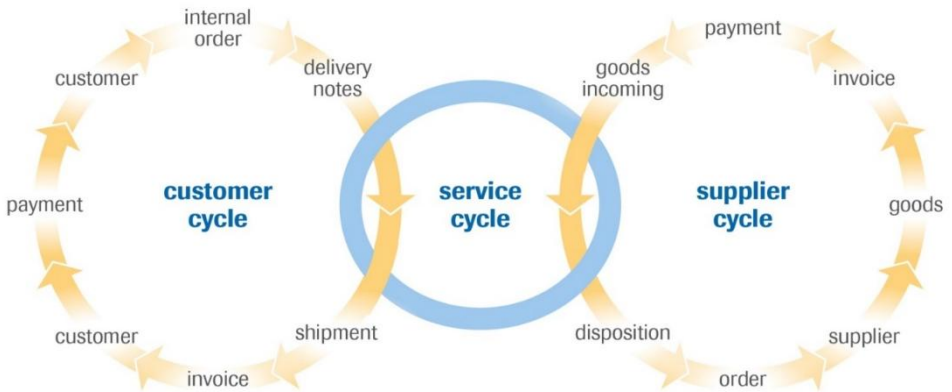


**Ralf Grammel**  
Partner



**Dr. Ernst Müller**  
Board of directors & Partner

## Supply Chain Management From Concept Phase to Implementation



- **Design**  
of all business process and their optimization
- **Logistics**  
of supplier management
- **Guaranteed Success**  
thanks to experience with international projects and well founded practical knowledge
- **Increased Profitability**  
Procurement logistics, warehouse optimization, operational planning
- **Helping people help themselves**  
Procurement logistics, warehouse optimization, operational planning
- **Implementation Support**

## Logistics Management Your Added Value

material · value · information · people · power



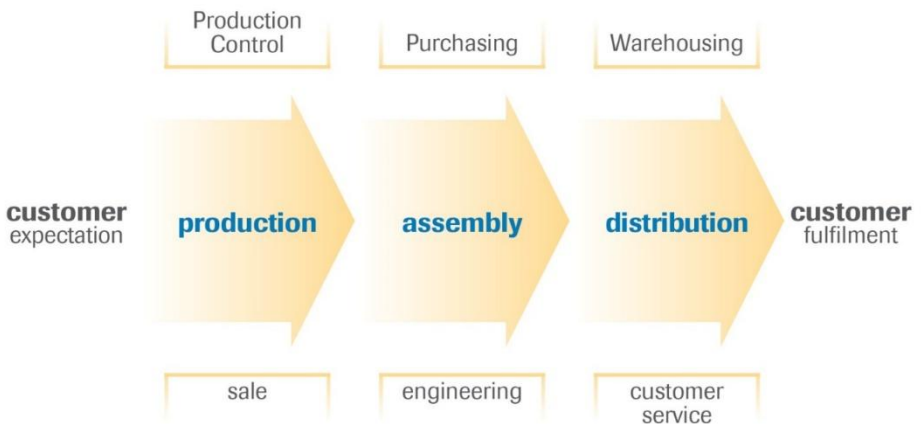
- **Logistics Check**  
strengths and weakness analysis,  
detected potential and action plan
- **Process Optimization**  
lead time reduction,  
outsourcing concepts
- **Dynamic Modelling**  
process and material flow simulation
- **Removal of Bottlenecks**  
inventory reduction, transparency
- **Distribution of Goods**  
commissioning
- **Implementation support**

## Lean Management Systematic Reduction of Waste



- **Tap into Potential**  
along the whole supply & value chain
- **Save considerably**  
in time, space & money
- **Focus on Optimal Process Design**  
along the value stream
- **Establish High Flexibility**  
as a key to your success
- **Lean Production**  
& optimal material flow
- **Implement Lean Culture**  
Lean administration, lean logistics & lean production

## Production & Technology Your Added Value



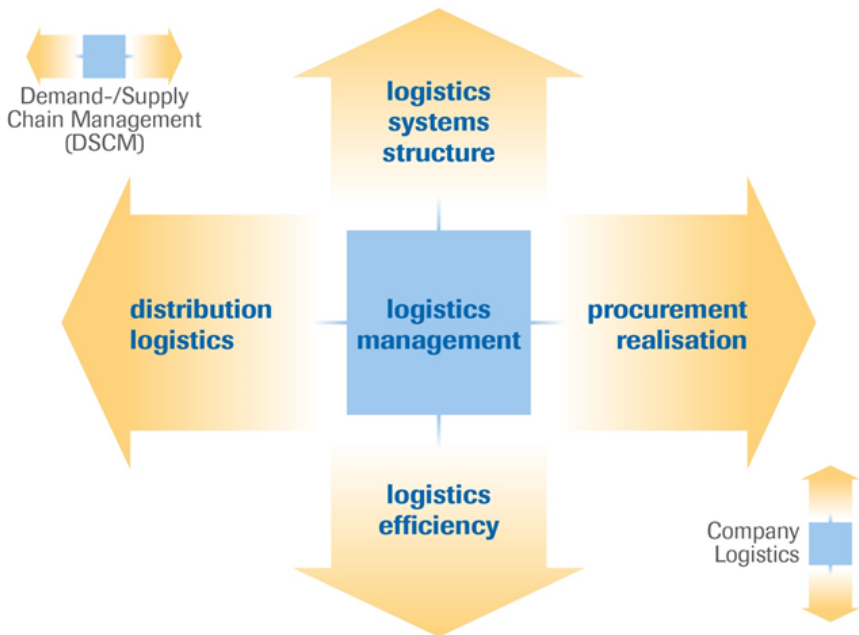
- **Production Check**  
with potential analysis and economic feasibility study
- **Production Strategy**  
Production concept with production segmentation
- **Resource Management**  
increase in throughput
- **Production Technology**  
Assembly and technology, workplace design, MTM
- **Project Management, Multi-PM**
- **Increase in productivity,**  
Setup time reduction & downtime analysis
- **Operations Planning**  
Factory planning & maintenance
- **Product Range Streamlining**  
Value analysis, standardization
- **Value Analysis Industrialization**
- **Implementati**  
of new technologies
- **Idea Management**

## Hospital Consulting Your Healthcare Consulting



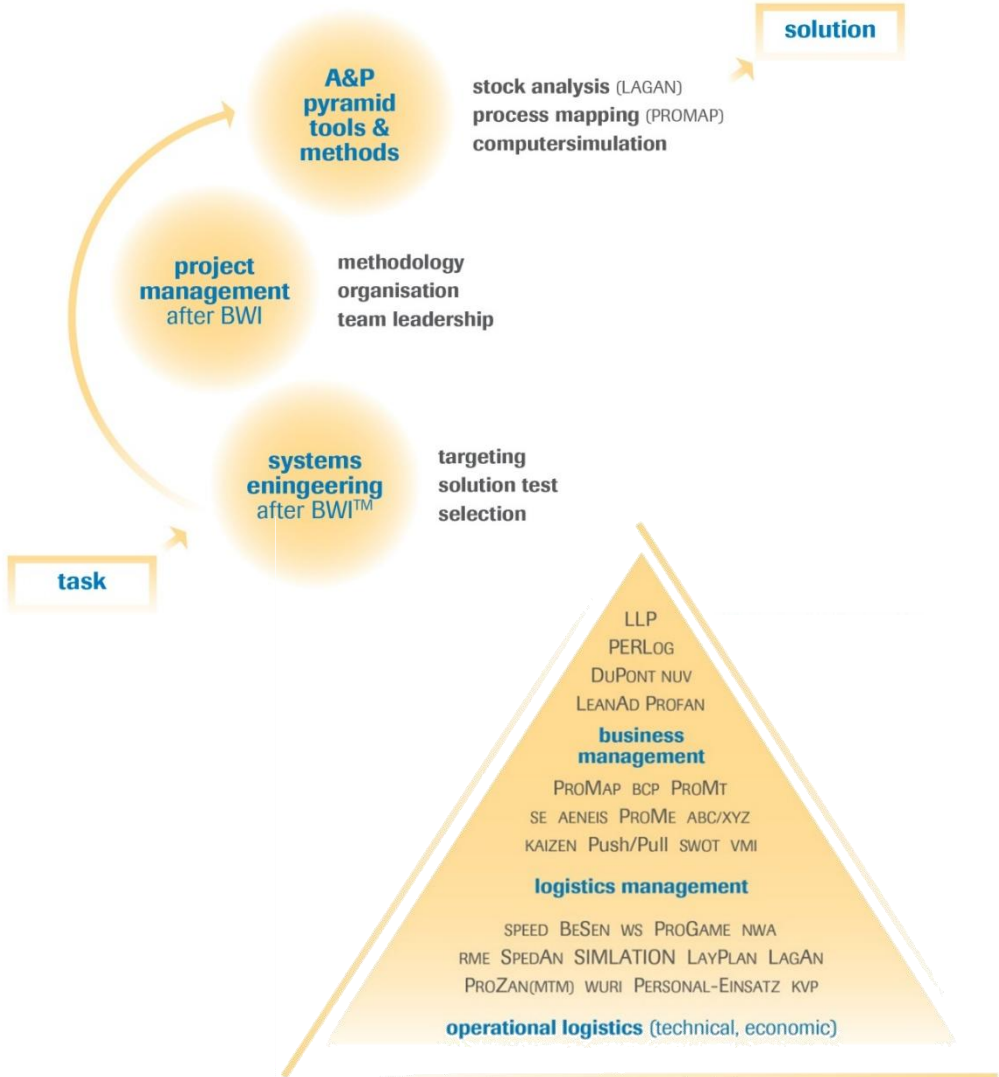
- **Improve Cost Structure**  
& create cost transparency
- **Relief for Skilled Workers**  
through adequate logistics solutions
- **Standardization**  
& optimized processes
- **Optimization**  
of internal interfaces
- **Anchor Goal Orientation**  
& process thinking among employees
- **Quality in Service Processes**  
including suppliers & service providers

## Business Processes Your Competitive Advantage

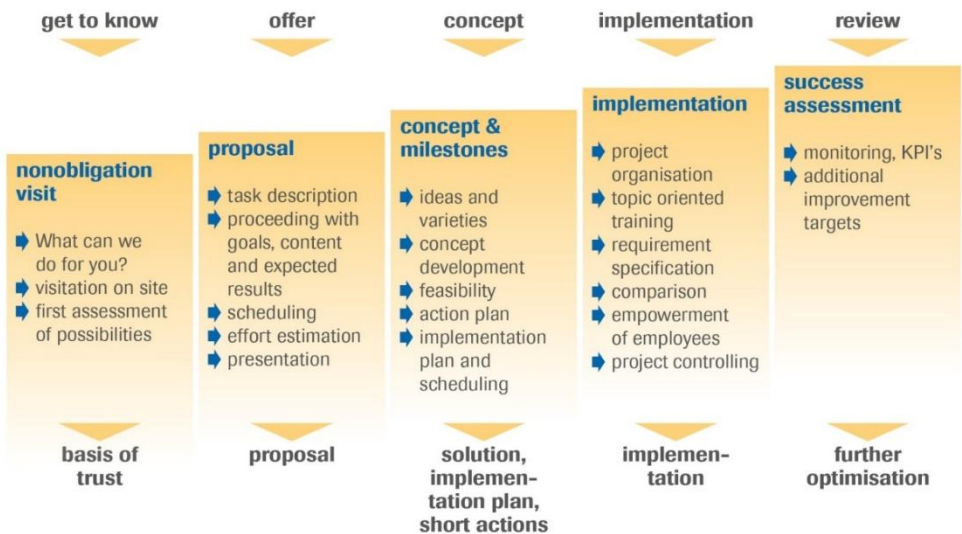


- **Logistics management**  
holistic logistics strategy
- **Distribution Logistics**  
definition of delivery quality and distribution
- **Procurement Logistics**  
supplier relationship management
- **Logistics Systems**  
Linking different processes
- **Logistics Optimization**  
Lead time & cost reduction, controlling, quality management
- **Implementation support**

**Methods & Tool-Box**  
Effectivity & Efficiency



## Our Approach A Proven Concept



The DR. ACÉL & PARTNER AG is an official successor company to the Foundation for Research and Consulting at the Business Administration Institute of the ETH Zurich (BWI Foundation).

# DR. ACÉL & PARTNER AG

International Consulting in Logistics Management

## **“We have doubled our productivity!”**

### **– Stephan Bocken, CEO Paques**

The payback period was less than a year: seven factory buildings were reduced to three. Productivity was doubled and inventories were cut by 40%. All this with the same throughput. We can recommend the lean professionals at Dr. Acél & Partner AG.

## **“Extremely successful and sustainable!”**

### **– Rainer Deutschmann Director SCM, Manor AG**

We were looking for targeted coaching, not a finished product. Dr. Acél enabled us to implement the changes ourselves. He and his team think outside the box. His input for quick wins was very useful – a clear recommendation!

## **“Fast implementation despite a tight schedule”**

### **– Georg Senn CEO Lifa AG**

When working with the dedicated consultants at Dr. Acél & Partner AG, it quickly became clear that we had found the right partner. Despite a tight schedule, we managed to achieve the goals we had set for the new building together.

Aargauerstrasse 1 - CH-8048 Zürich - Tel. +41 44 447 20 60 – Fax +41 44 447 20 69  
info@acel.ch – www.acel.ch

**We look forward to making your acquaintance!**